



600 Series Smart Switch



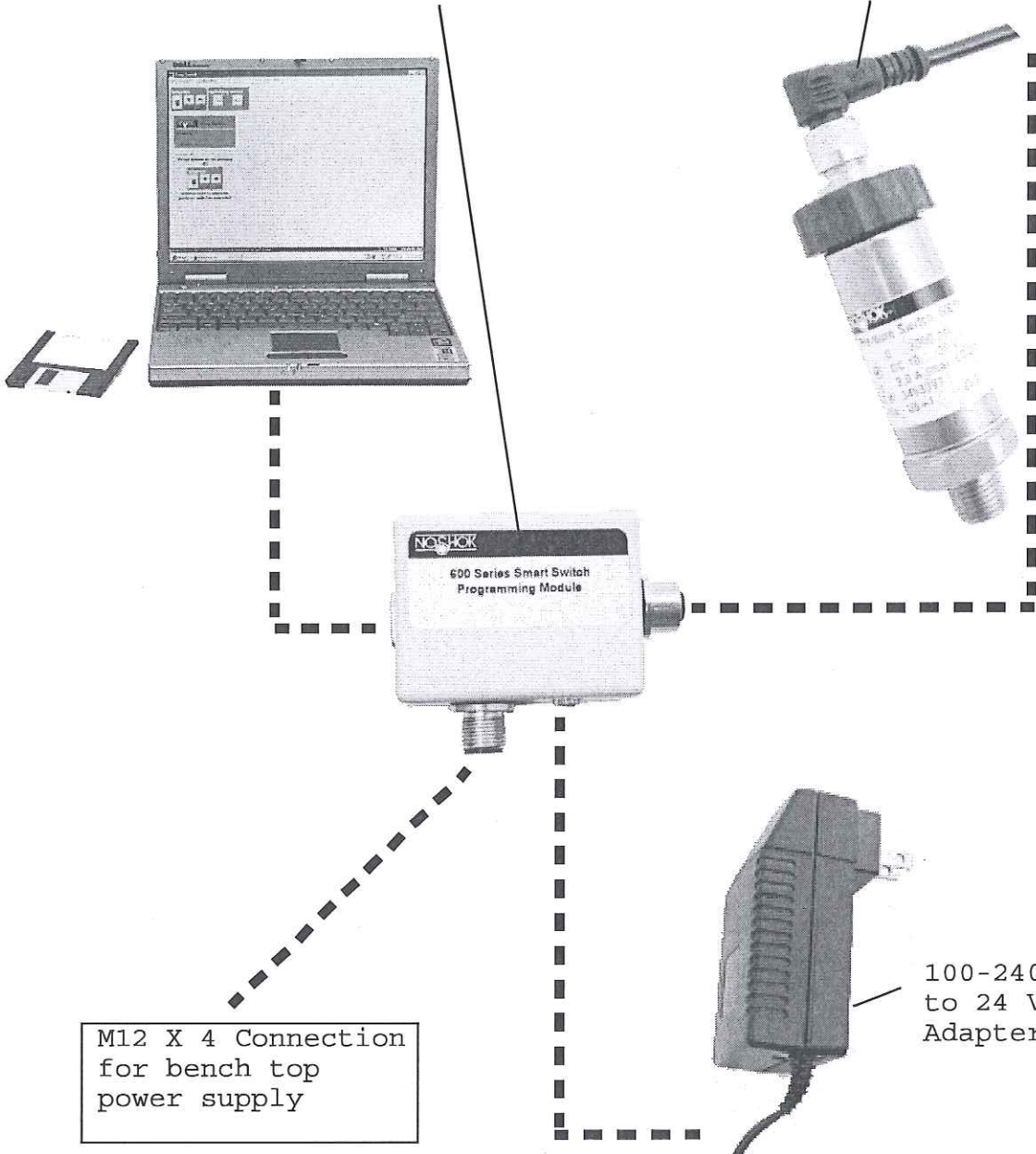
Configuring Software System Requirements

Hardware: 80486 CPU, min. 32 MB RAM

Software: WIN 95/98, WIN NT 4.0

programming module

electronic pressure switch



M12 X 4 Connection
for bench top
power supply

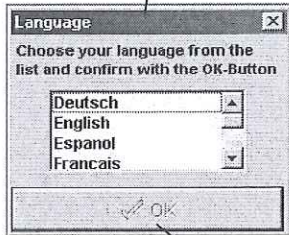
100-240 Vac
to 24 Vdc
Adapter

select com 1 or com 2

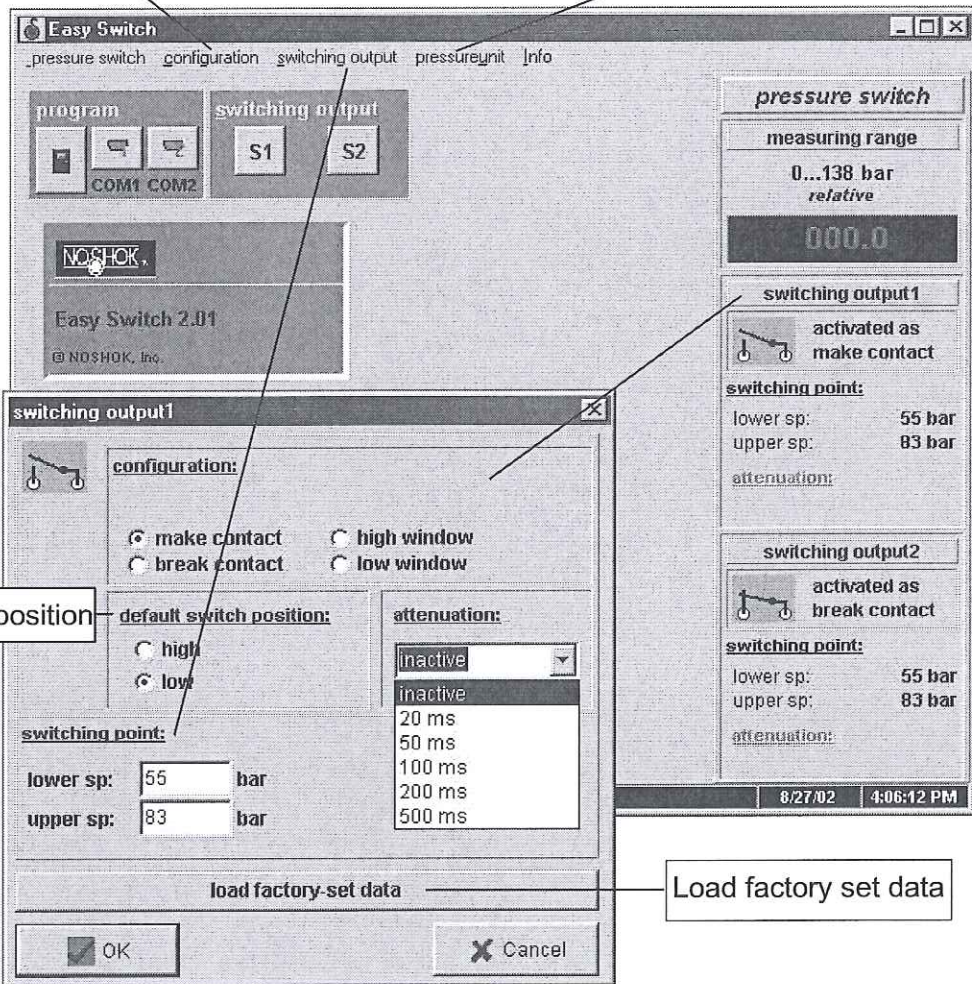
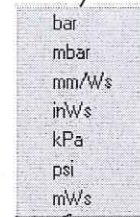
The screenshot shows the 'Easy Switch' software interface. At the top, there is a menu bar with options: `_pressure switch`, `configuration`, `switching output`, `pressure unit`, and `Info`. Below the menu bar, there are two main sections: 'program' and 'switching output'. The 'program' section contains three buttons: a power button, a button with a speech bubble icon, and a button with a speech bubble icon and a plus sign. Below these buttons are the labels 'COM1' and 'COM2'. The 'switching output' section contains two buttons labeled 'S1' and 'S2'. A callout box from the text 'select com 1 or com 2' points to the COM1 and COM2 buttons. Below these sections, there is a 'NOSHOK' logo and the text 'Easy Switch 2.01' and '© NOSHOK, Inc.'. A message box says 'please activate pressure switch in menu' and shows a smaller version of the 'program' buttons. At the bottom, a status bar contains the text 'select this command button when your pressure switch is connected to COM2', the date '8/27/02', and the time '3:17:52 PM'.

Software Description

Select the menu language via Configuration



Select the menu pressure unit



Default switch position

Load factory set data

Software Description

Switching output 1 Configuration

The screenshot shows a configuration window titled 'switching output1'. It contains several sections: 'configuration:' with radio buttons for 'make contact' (selected), 'break contact', 'high window', and 'low window'; 'default switch position:' with radio buttons for 'high' and 'low' (selected); 'switching point:' with input fields for 'lower sp: 55 bar' and 'upper sp: 83 bar'; and 'attenuation:' with a dropdown menu showing 'inactive', '20 ms', '50 ms', '100 ms', '200 ms', and '500 ms'. At the bottom, there is a 'load factory-set data' button, an 'OK' button, and a 'Cancel' button. Callouts point to various elements: 'Make contact' points to the first radio button; 'Break contact' points to the second; 'High window' and 'Low window' point to the third and fourth; 'Switching point' points to the 'lower sp' field; 'Lower sp and upper sp' points to the 'upper sp' field; 'Attenuation' points to the dropdown menu; and 'Predefined state of switch after initialization' points to the 'load factory-set data' button.

Make contact

Break contact

High window

Low window

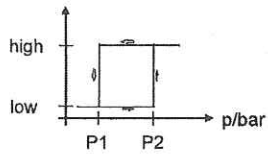
Switching point

Lower sp and upper sp

Attenuation

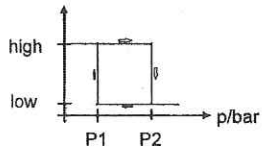
Predefined state of switch after initialization

A pressure reading must be present for this minimum time in ms to cause the switch to change state.



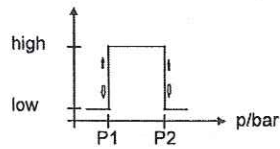
make contact

upper sp P2 switches into "high" lower sp P1 switches into "low"



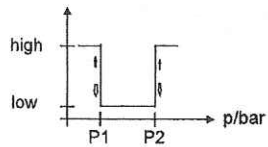
break contact

upper sp P2 switches into "low" lower sp P1 switches into "high"



high window

a high window is defined between the lower sp P1 and upper sp P2



low window

a low window is defined between the lower sp P1 and upper sp P2

When no customer-specific configuration of the switching points is given with the order the following factory settings are the standard.

Switch S1 closing

switching point 1: 40% of span
switching point 2: 60% of span
damping: 0 ms

default settings S1:

break contact normally closed
make contact normally open
low-window normally closed
high-window normally open

Switch S2 opening

switching point 1: 40% of span
switching point 2: 60% of span
damping: 0 ms

default settings S2:

break contact normally closed
make contact normally open
low-window normally closed
high-window normally open

*The
Instrumentation
Company*



Corporate Headquarters

1010 West Bagley Road
Berea, Ohio 44017
Phone: 440.243.0888
Fax: 440.243.3472
E-mail: noshok@noshok.com
Web: www.noshok.com

ISO 9001:2008
REGISTERED