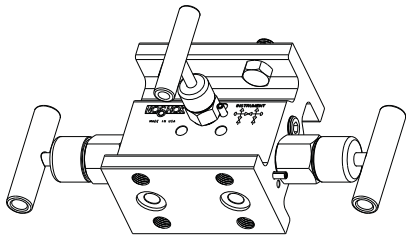
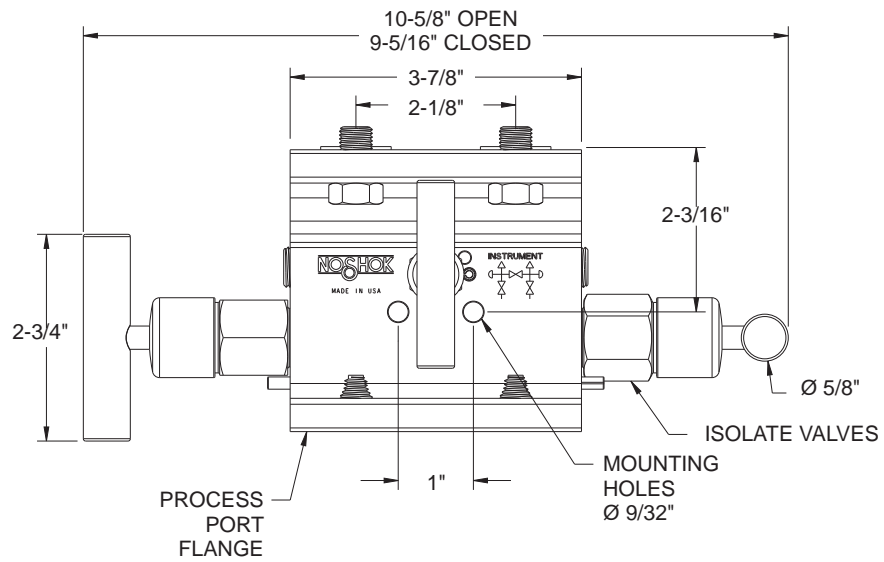


Dimensions

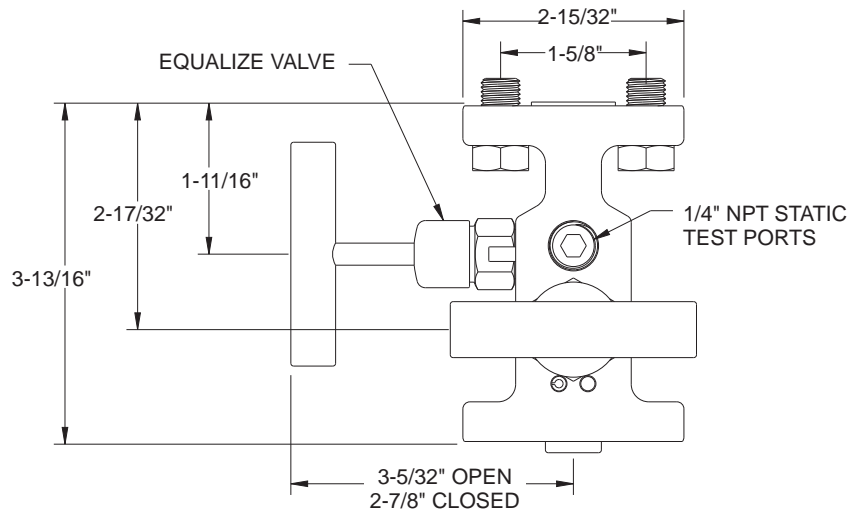
Flange-Flange



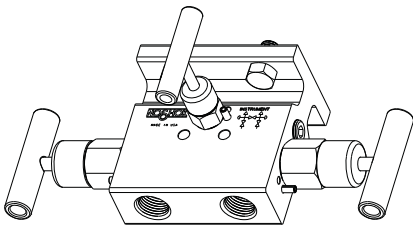
Top View



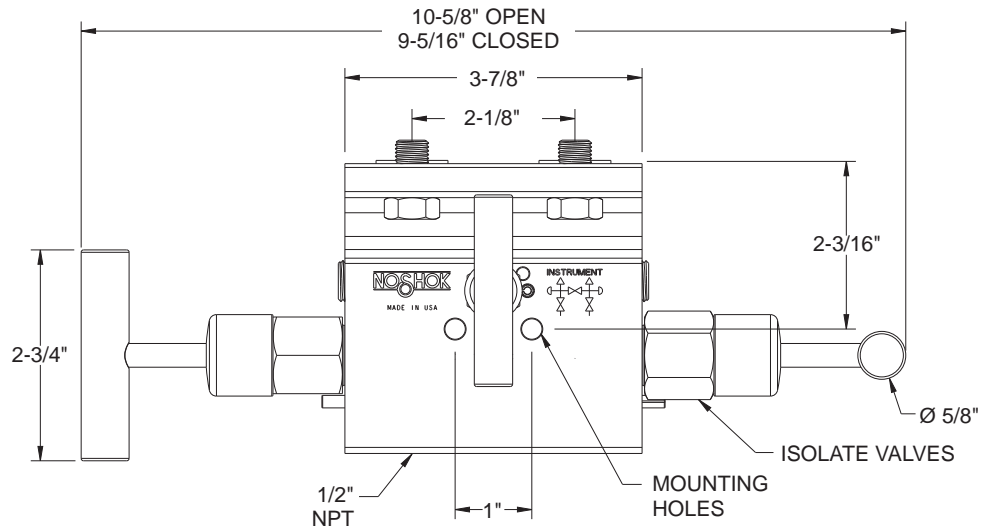
Side View



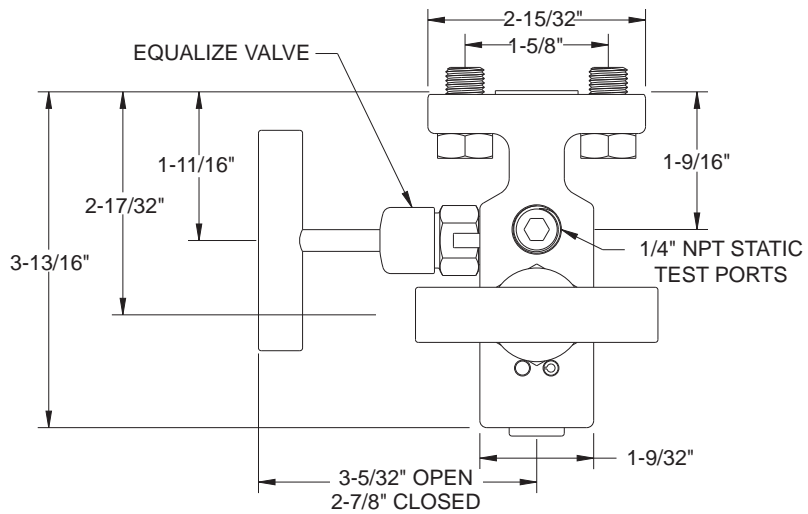
Flange-Female



Top View

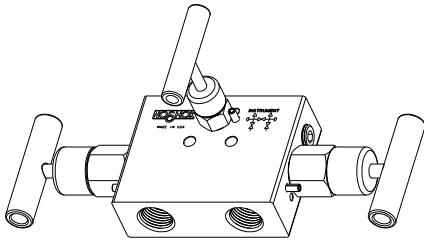


Side View

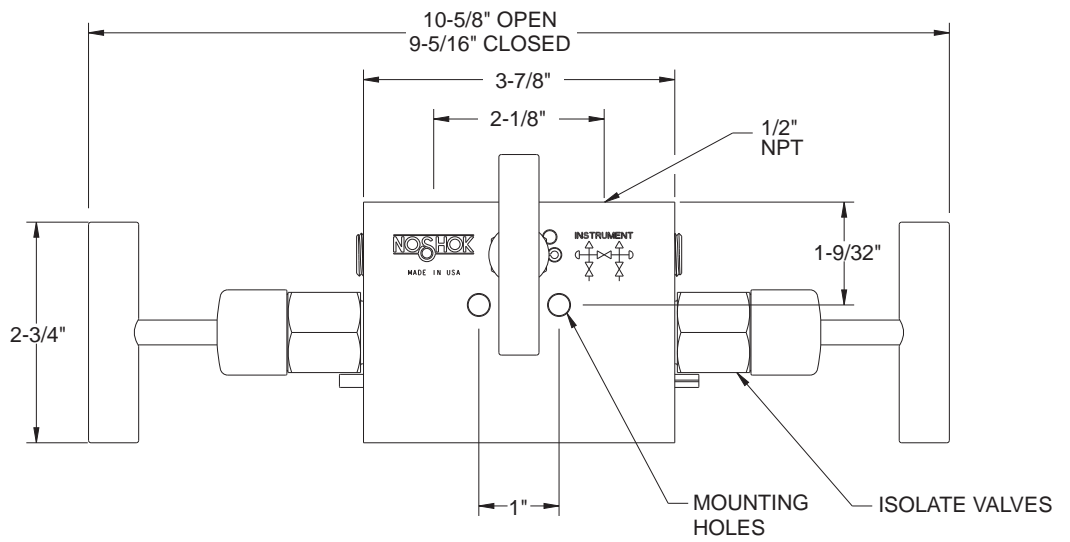


Dimensions

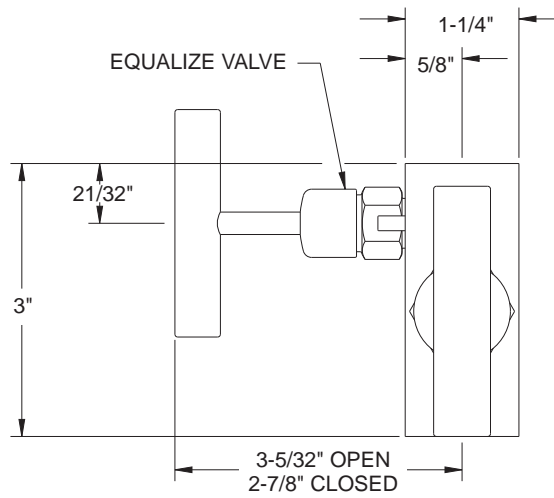
Female-Female



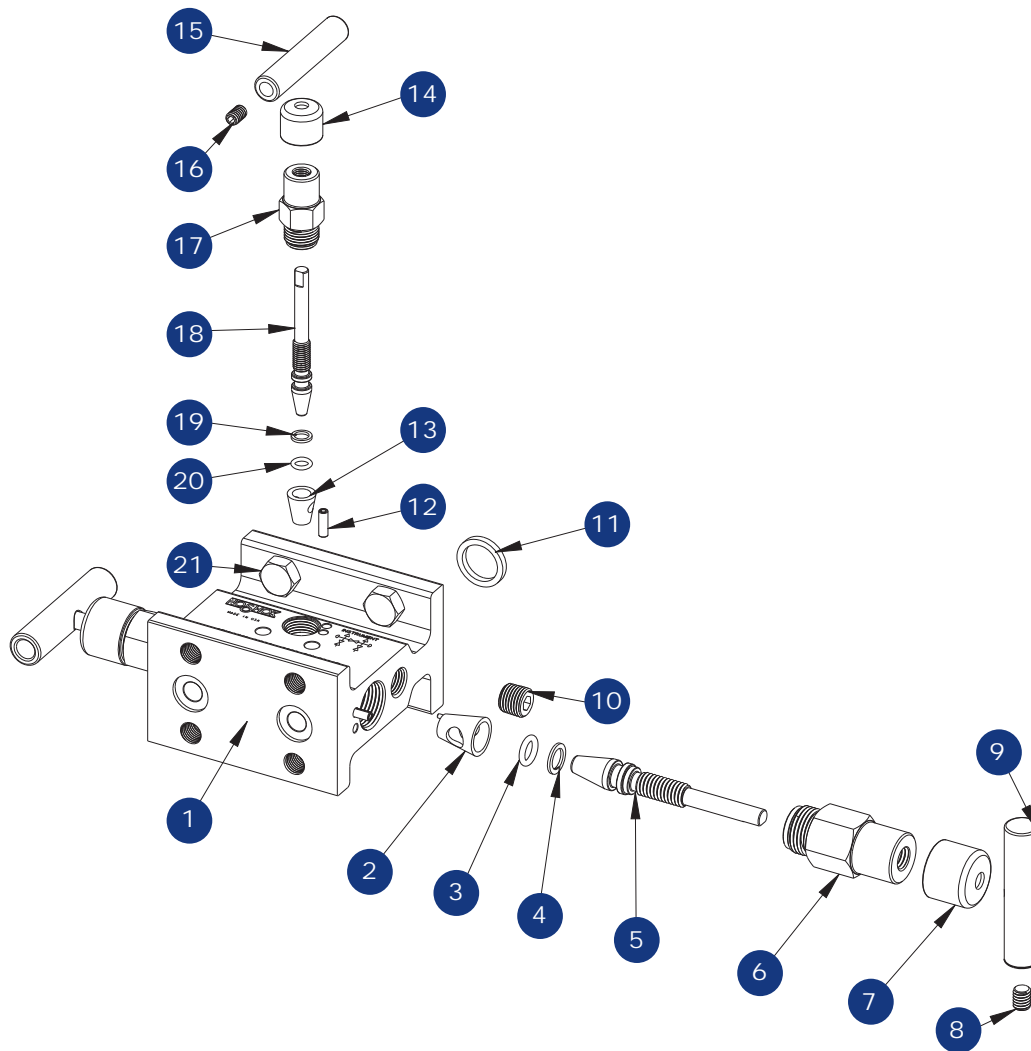
Top View



Side View



For panel mount and packing dimensions, see pgs. 64-65.



- | | |
|------------------------------|-----------------------|
| 1 Valve body | 12 Slotted spring pin |
| 2 Delrin® seat | 13 Delrin® seat |
| 3 FKM o-ring | 14 Green dust cap |
| 4 PTFE back-up ring | 15 Valve "T" handle |
| 5 Non-rotating stem assembly | 16 Set screw |
| 6 Valve bonnet | 17 Valve bonnet |
| 7 Blue dust cap | 18 Valve stem |
| 8 Set screw | 19 PTFE back-up ring |
| 9 Valve "T" handle | 20 FKM o-ring |
| 10 Plug | 21 Head bolt |
| 11 Gasket ring | |