



1100 Series Differential Pressure Gauge Operating and Installation Instructions

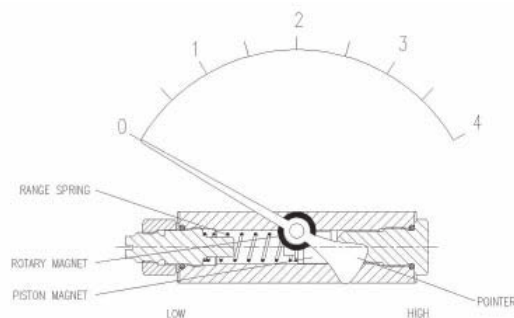
Gauge Inspection:

Please read the product specifications label attached to the gauge body to insure that this gauge is the same gauge specified for the particular application as it applies to dial size, materials of construction, working pressure, differential pressure, etc. Inspect for any shipping damage and, if discovered, report it immediately

Product Design Features:

The NOSHOK 1100 Series is a magnetically coupled, convoluted diaphragm, differential pressure gauge. It is designed for use where particulate matter, carried in the system media, will not affect gauge performance, because there are no close internal tolerances in the sensor cell and there is total separation between the high (+) and low (-) sides of the gauge. Designed for working pressures to 3,000 PSIG and low to high differential pressure from 0-50" H₂O to 0-100 PSID. The high side (+) pressure works against the diaphragm assembly and the calibrated DP range spring. A follower magnet, attached to the pointer, tracks the linear movement of this assembly. The pointer, in turn, indicates the differential pressure. The convoluted diaphragm is fully supported, in either direction, to the rated working pressure of the gauge.

Measuring system diagram



Gauge Mounting:

This gauge is supplied, standard, for panel mounting. If installing the 2.5" dial gauge, remove the four (4) bezel screws, mount the gauge from front to back in the panel, then reinsert the four (4) screws through the panel and into the bezel and tighten securely to the panel (Do not over-torque). If installing the 4.5" dial gauge, mount the four (4) threaded studs into the back of the dial case, where indicated (Do not over-torque). Mount the gauge from front to back in the panel and secure the gauge to the panel with the locking nuts on the threaded studs. Optional pipe mount kits or wall mount kits are available. (Note: 2 1/2" gauge cannot be panel mounted if case is liquid filled.)

Gauge Connections:

Standard (2) x 1/4" FNPT back connections. Optional connection sizes and top, bottom or dual top/bottom connection is available

Troubleshooting:

If the gauge is not indicating differential pressure, check to insure both the high (+) and low (-) side connections have been properly installed. Check to insure that there is pressure to the high (+) side of the gauge and that there is differential pressure across the device being monitored by the NOSHOK 1100 Series. If the system is being used together with a three-valve manifold, check to insure that the high (+) and low (-) valves are in the open position and the equalizer valve is in the closed position. If, after following these steps with no positive result, please contact the NOSHOK Customer Service Department or your nearest NOSHOK Distributor.

The
Instrumentation
Company



Corporate Headquarters

1010 West Bagley Road
Berea, Ohio 44017
Ph: 440.243.0888
Fax: 440.243.3472
E-mail: noshok@noshok.com
Web: www.noshok.com